



TWV/49/29 Add.
ORIGINAL: English
DATE: July 16, 2015

INTERNATIONAL UNION FOR THE PROTECTION OF NEW VARIETIES OF PLANTS
Geneva

TECHNICAL WORKING PARTY FOR VEGETABLES

Forty-Ninth Session
Angers, France, June 15 to 19, 2015

ADDENDUM TO
MANAGEMENT OF REFERENCE COLLECTIONS

Document prepared by an expert from France

Disclaimer: this document does not represent UPOV policies or guidance

The Annex to this document contains a presentation on the management of reference collections in France made at the forty-ninth session of the Technical Working Party for Vegetables (TWV).

[Annex follows]

ANNEX

2015 DUS Reference Collection: *French approach*

Chrystelle JOUY
DUS Vegetable expert

UPOV TWV meeting – June 15-19, 2015
ANGERS



Establishment of a DUS reference collection

Some key words

- A long term investment
- Constantly evolving : subject of regular updates.
- Unrelated with the varietal types under study on a test campaign

GEVES's Quality management...

- Generic concepts of collection: defined in a Quality global PROCEDURE DHS/DEM/P/005
 - notion of nested collection: **Theoretical Collection**
 - Technical Collection
 - Effective Collection
- General DUS Vegetable species test PROTOCOL
DOCDHS/POT/PROTO/001/ind10.

Establishment of the Theoretical Collection

● By the DUS examiner, who considers the varieties of common knowledge from:

- 1. CPVO Plant Variety Finder**
*Varities **listed** and / or **protected** in UPOV member states.*
EU vegetable species catalog
Lists of the varieties in DUS tests provides by Examination Offices
OECD list
- 2. National collection of Genetic Resources**
Records of the old varieties
- 3. Commercial catalogs of marketing companies**
 - Many states without National catalog
 - Number of protected varieties restricted
 - Worldwide GEVES trade catalogues since 1970
 - a base of global vegetable seed establishments (several hundred institutions surveyed each year)

Establishment of the Technical collection (1/3)

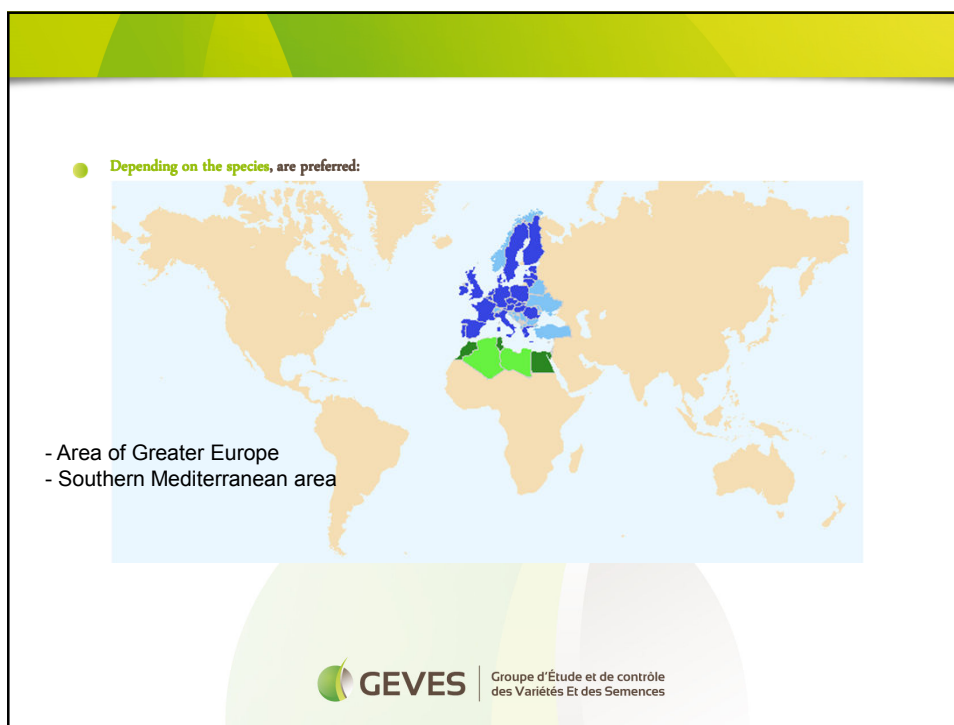
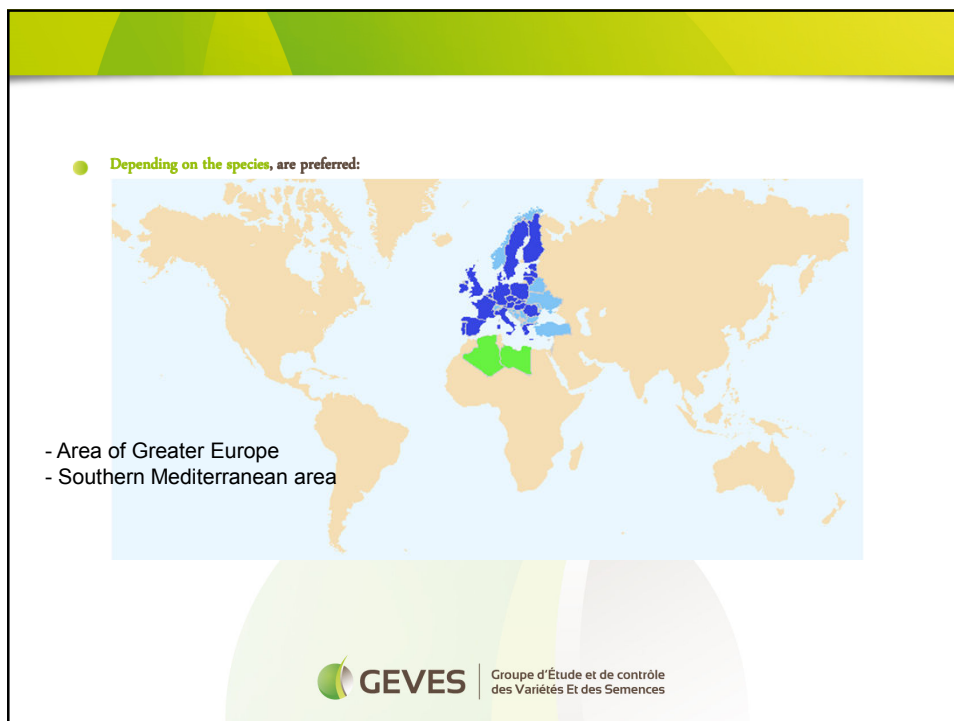
● Setting priorities and exclusions from the Theoretical collection
Focus, *among others*, on the varieties of:

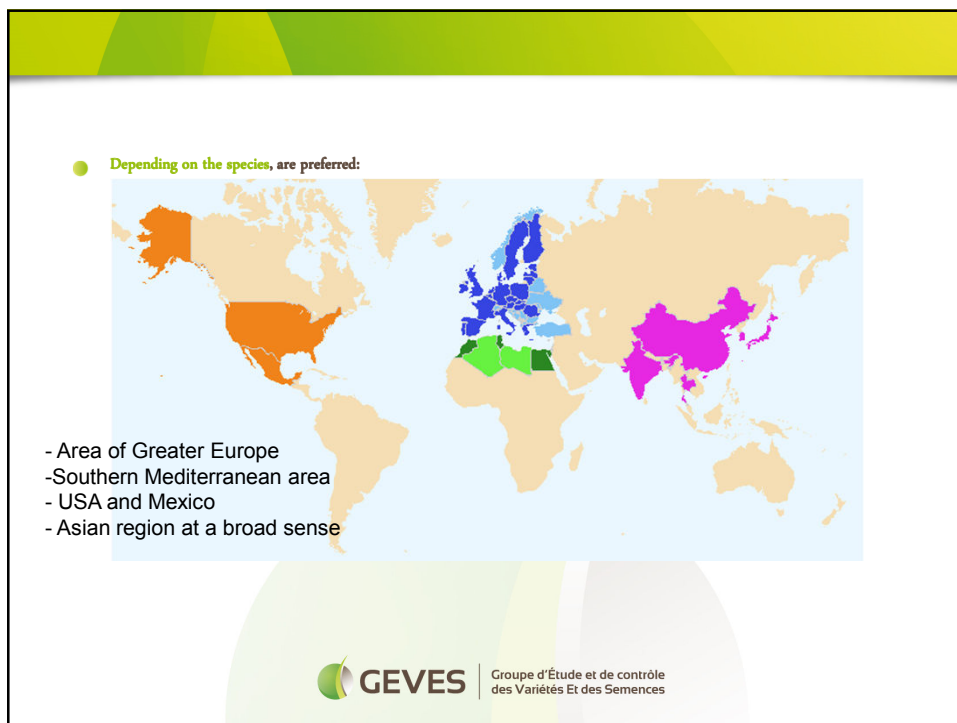
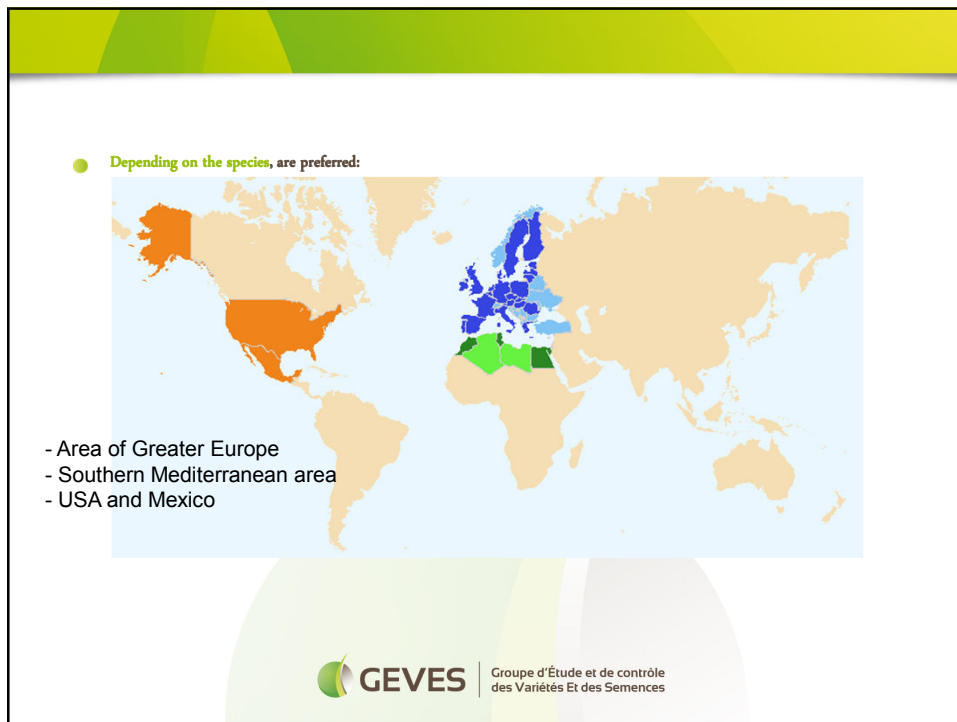
- **agro climatic zones**
- where the **genetic variability of commercial varieties** is **equivalent to the panel of DUS applications** assessed by GEVES.

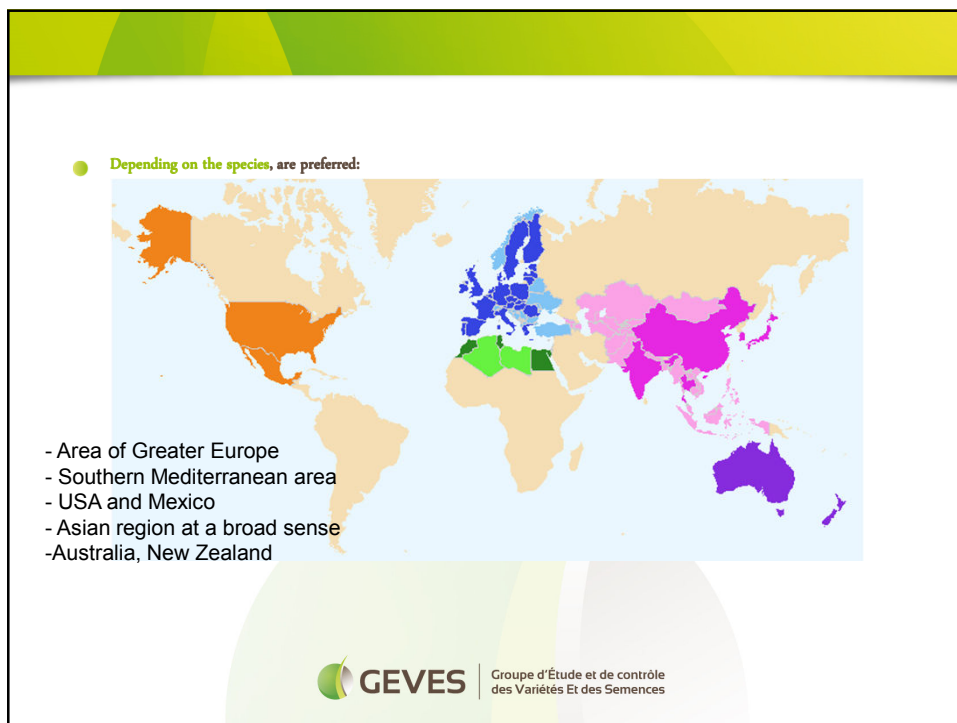
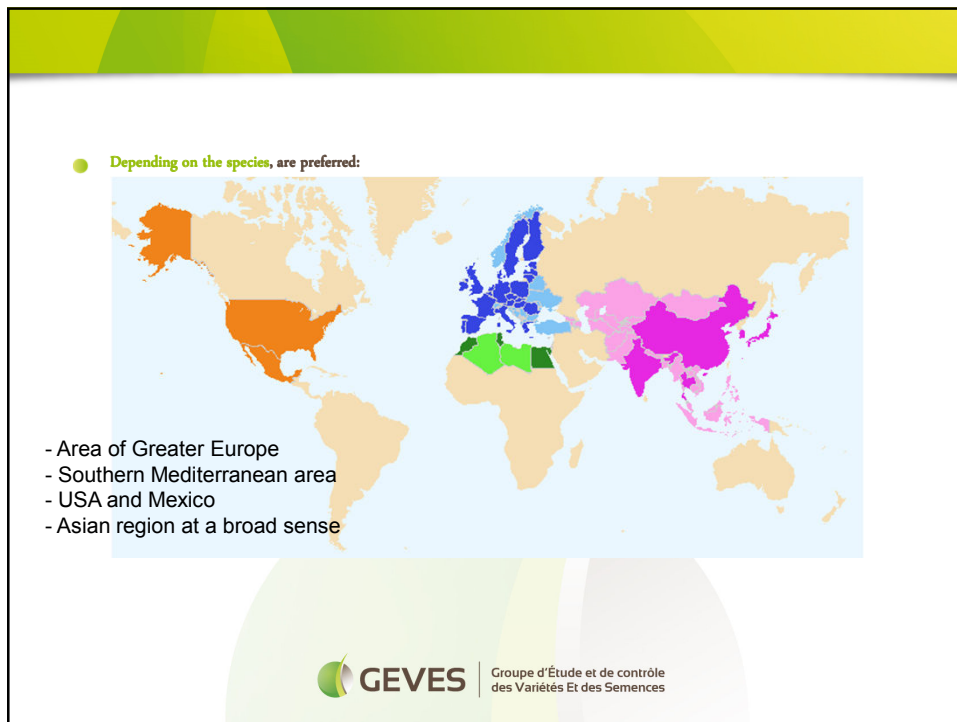
Depending on the species, are preferred:

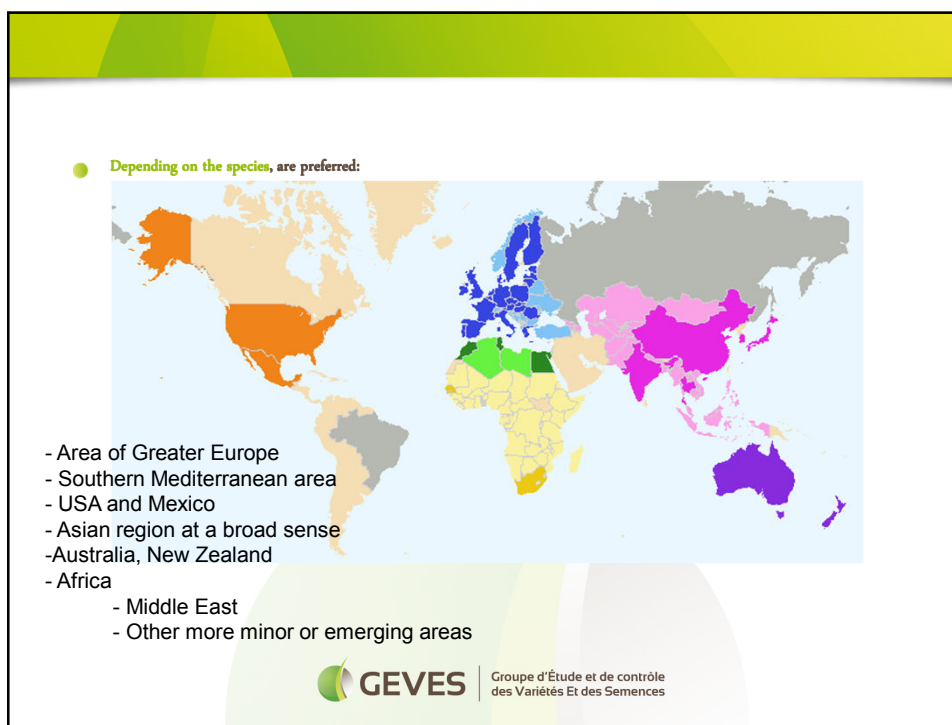
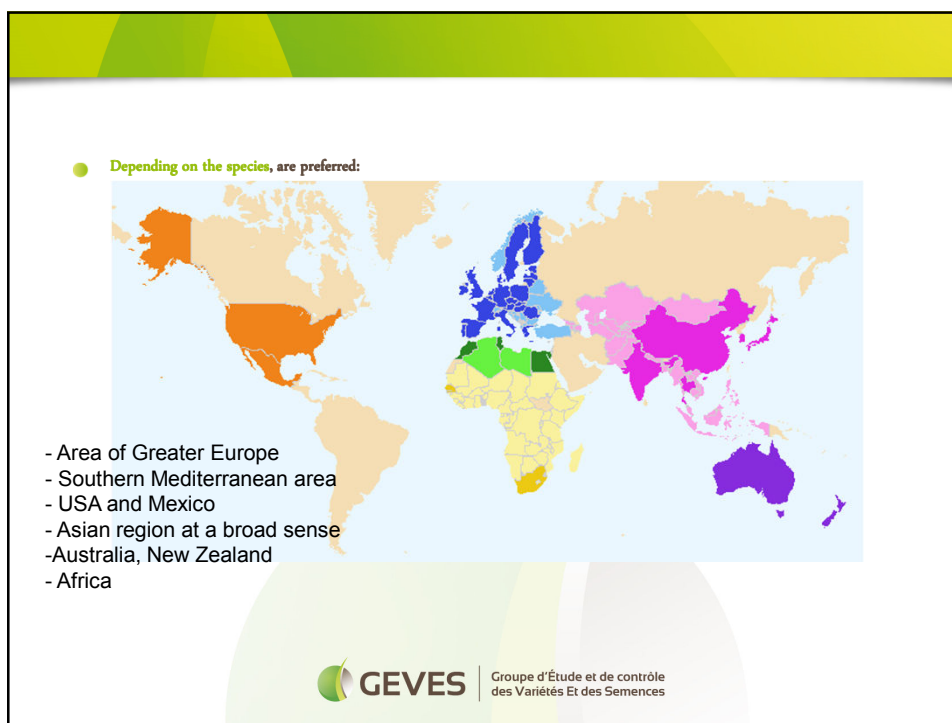
- Area of Greater Europe
- Southern Mediterranean area
- USA and Mexico
- Asian region at a broad sense
- Australia,
- Africa
- Middle East
- Other more minor or emerging areas











Establishment of the

Technical collection (2/3)

- **Are excluded,**
 - GM and material of **conventional varieties** which can contain the presence of GMOs
until French regulations prohibit their cultivation in France,
 - Varieties **too old**, very significantly away from the pool of varieties under study
 - and any variety **considered irrelevant** by the DUS Officer.
- **A database yearly amended:**

Establishment of the

Technical collection (3/3)

- The DUS examiners are involved in:
 - GEVES technical databases – per species - allowing the management of descriptive documentary collections with:
 - Varieties **officially tested** and described by **GEVES**
 - **Descriptions** coming from **Examination Offices** of UPOV members
 - Varieties of common knowledge, without official description, **described by GEVES** on the **seed samples freely provided** (introductions)
 - And **reduced descriptions** used as a source of expertise for reliable qualitative characteristics (**technical institutes, commercial catalogs, websites...**).
 - Common databases with **DUS Examination Offices invested in cooperative action** for DUS.
It is actually set up for Lettuce, Pea and Tomato (FR/ NL, since 2012).
There is an a new CPVO project for Melon (since 2015).

Establishment of the

Effective collection (1/3)

- It consists of:
 - a collection of "**physical**" **seed samples** in cold storage
 - A collection of "**living**" **plant material** for vegetatively propagated varieties / species **associated with**
- **Technical descriptions**, allowing the compulsory sort to identify the relevant example varieties to set up a DUS test related to the Technical questionnaire of a new application.
- The DUS examiner has the **responsibility to attempt to obtain the constitutive samples** of the reference collection.
- They can be provided by **breeders or maintainers** of the concerned varieties , or eventually by the **Examination Office** who set up the DUS exam.
- **Each EO** is invited to **provide to other EO**, the official produced descriptions. (**progressive and reciprocal supplying**)

Establishment of the

Effective collection (2/3)

Some difficulties:

- **Transit periods**
- **Regulation constraints** of the circulation of the samples throughout the world: phytosanitary quarantine, Material Transfert Agreement, ...
- Breeders, maintainers who *don't identify the interest* to freely cooperate with Examination offices, or who cooperate with a reduce (or only one) EO
- **quality EU standard samples** for varieties of common knowledge,
- candidate varieties' samples during their DUS study abroad,
- delisted varieties or varieties whose protection rights are abandoned.

If, **despite the efforts** of the DUS examiner, varieties are **not present** in the Effective collection, this does **not** constitute a **non-compliance**.

He has to **keep track** of the **requests**.

Efforts are yearly (if possible) conducted to incorporate varieties in the Effective collection.

Establishment of the

Effective collection (3/3)

Seed quality requirement

- Health quality, germination vigor, varietal and species purity:

Common purpose

- The DUS examiner may have to **implement the following DUS cycle** with the required varieties to perform and finalize the running Distinction exercise (received material after the first cycle's implantation, a review of the comparison group due to new elements ...).

Renewals

- Batches packaged and stored in a cold room under **optimal preservation conditions**.
- GEVES ensures the **renewal of reference lots** of varieties of the collection.
- Appropriate procedures, to **confirm the consistency** of the new batch.
 - Under French National Listing procedure (CTPS) : **maintenance control** = basis of the renewal.
- For **any difficulty to obtain** the reference material renewal, GEVES informs the **requesting authority** of the exam.

Thank you for your attention

15 juillet 2015, ANGERS

WWW.GEVES.FR



GEVES
Expertise & Performance