



TC-EDC/Jan15/13

ORIGINAL: English

DATE: December 12, 2014

INTERNATIONAL UNION FOR THE PROTECTION OF NEW VARIETIES OF PLANTS

Geneva

ENLARGED EDITORIAL COMMITTEE**Geneva, January 7 and 8, 2015**

REVISIONS OF DOCUMENT TGP/9: "EXAMINING DISTINCTNESS":
SECTION 1.6: "SCHEMATIC OVERVIEW OF TGP DOCUMENTS CONCERNING DISTINCTNESS";
SECTION 2.5: "PHOTOGRAPHS";
SECTION 4.3.2: "SINGLE RECORD FOR A GROUP OF PLANTS OR PARTS OF PLANTS (G)"
AND 4.3.4: "SCHEMATIC SUMMARY"

Document prepared by the Office of the Union

Disclaimer: this document does not represent UPOV policies or guidance

EXECUTIVE SUMMARY

1. The purpose of this document is to present proposals for the revision of document TGP/9 "Examining distinctness", Section 1.6 "Schematic overview of TGP documents concerning distinctness", Section 2.5 "Photographs", Section 4.3.2 "Single record for a group of plants or parts of plants (G)" and Section 4.3.4 "Schematic Summary".
2. The TC-EDC is invited to consider the:
 - (a) proposal for revision of the flow diagram in TGP/9, Section 1.6 "Schematic overview of TGP documents concerning distinctness", as set out in paragraphs 7 and 8 and Annexes I and II to this document;
 - (b) proposed guidance on photographs for inclusion in document TGP/9, Section 2.5 "Photographs", as set out in paragraph 15; and
 - (c) proposed example of a single record for a group of plants (MG) taken on plant parts for inclusion in a future revision of document TGP/9, Section 4.3.2 "Single record for a group of plants or parts of plants (G)" and Section 4.3.4 "Schematic Summary", as set out in paragraphs 21 and 22.

3. The structure of this document is as follows:

EXECUTIVE SUMMARY	1
PURPOSE	3
SECTION 1.6 SCHEMATIC OVERVIEW OF TGP DOCUMENTS CONCERNING DISTINCTNESS.....	3
Comments by the Technical Working Parties in 2014.....	3
SECTION 2.5 “PHOTOGRAPHS”	4
Comments by the Technical Working Parties in 2014.....	5
SECTION 4.3.2 “SINGLE RECORD FOR A GROUP OF PLANTS OR PARTS OF PLANTS (G)” AND SECTION 4.3.4 “SCHEMATIC SUMMARY”	5
Comments by the Technical Working Parties in 2014.....	5
ANNEX I: SCHEMATIC OVERVIEW OF TGP DOCUMENTS CONCERNING DISTINCTNESS	
ANNEX II: SCHEMATIC OVERVIEW OF TGP DOCUMENTS	
ANNEX III: EXAMPLES OF CHARACTERISTICS USING SINGLE MEASUREMENT (MG) FOR PLANT PARTS	
ANNEX IV: SCHEMATIC SUMMARY OF SINGLE RECORD FOR A GROUP OF PLANTS OR PARTS OF PLANTS	

4. The following abbreviations are used in this document:

CAJ:	Administrative and Legal Committee
TC:	Technical Committee
TC-EDC:	Enlarged Editorial Committee
TWA:	Technical Working Party for Agricultural Crops
TWC:	Technical Working Party on Automation and Computer Programs
TWF:	Technical Working Party for Fruit Crops
TWO:	Technical Working Party for Ornamental Plants and Forest Trees
TWV:	Technical Working Party for Vegetables
TWPs:	Technical Working Parties

PURPOSE

5. The purpose of this document is to present proposals for the revision of document TGP/9 “Examining distinctness”, Section 1.6 “Schematic overview of TGP documents concerning distinctness”, Section 2.5 “Photographs”, Section 4.3.2 “Single record for a group of plants or parts of plants (G)” and Section 4.3.4 “Schematic Summary”.

SECTION 1.6 SCHEMATIC OVERVIEW OF TGP DOCUMENTS CONCERNING DISTINCTNESS

6. The TC, at its fiftieth session held in Geneva, from April 7 to 9, 2014, considered the revision of the flow diagram in TGP/9 and agreed that it should be reviewed in conjunction with other possible changes to be introduced in documents TGP/4 “Constitution and Maintenance of Variety Collections” and TGP/9 “Examining Distinctness” resulting from the adoption of document TGP/15 “Guidance on the Use of Biochemical and Molecular Markers in the Examination of Distinctness, Uniformity and Stability (DUS)”¹ (see document TC/50/36 “Report on the Conclusions”, paragraph 72) .

7. On the above basis, and taking into account revisions to other TGP documents, the TWP, at their sessions in 2014, were invited to consider amending the flow diagram in document TGP/9 as follows:

Box “Forms of variety collection:”	to read: “Varieties or living plant material not included in the variety collection”
Box “Data analysis Methods:”	to read: “COYD; 2x1%; Chi-Square Test; Fisher’s Exact Test”

8. In addition, in order to simplify the diagram, the TWP, at their sessions in 2014, were invited to consider deleting the boxes for documents TGP/6 “Arrangements for DUS Testing” and TGP/7 “Development of Test Guidelines” and to create a new diagram to provide an overview of the relevant TGP documents, set out in Annexes I and II, respectively.

Comments by the Technical Working Parties in 2014

9. At their sessions in 2014, the TWO, TWF, TWC, TWV and TWA considered documents TWO/47/22, TWF/45/22, TWV/48/22, TWC/32/22 and TWA/43/22, respectively, which contained proposals for the revision of document TGP/9 “Examining distinctness”, Section 1.6 “Schematic overview of TGP documents concerning distinctness”, as set out in paragraphs 7 and 8.

General	The TWO considered document TWO/47/22 and agreed with the proposed revision of the flow diagram in TGP/9, Section 1.6 “Schematic overview of TGP documents concerning distinctness”, as set out in document TWO/47/22, paragraph 7 and Annexes I and II (see document TWO/47/28 “Report”, paragraph 59).	TWO
	The TWC considered document TWC/32/22. The TWC agreed with the proposed revision of the flow diagram in TGP/9, Section 1.6 “Schematic overview of TGP documents concerning distinctness”, as set out in document TWC/32/22, paragraph 7 and Annexes I and II (see document TWC/31/32 “Report”, paragraphs 60 and 61).	TWC
	The TWV considered document TWV/48/22 and agreed with the revision of the flow diagram in TGP/9, Section 1.6 “Schematic overview of TGP documents concerning distinctness”, as set out in document TWV/48/22, Annex I (see document TWV/47/34 “Report”, paragraph 63).	TWV

¹ Reference to document UPOV/TGP/15 “Guidance on the Use of Biochemical and Molecular Markers in the Examination of Distinctness, Uniformity and Stability (DUS)” corrected from document TC/50/36 “Report on the Conclusions”, paragraph 72.

Annex II, TGP/3 box	<p>The TWA considered document TWA/43/22 and the revision of the flow diagram in TGP/9, Section 1.6 “Schematic overview of TGP documents concerning distinctness”, as set out in Annexes I and II to document TWA/43/22.</p> <p>The TWA noted that reference to document TGP/3 “Elaborating the notion of varieties of common knowledge” had not been included in the new schematic in Annex II of document TWA/43/22 and agreed that it should be consistent between the two schematics (see document TWA/43/27 “Report”, paragraphs 55 and 56).</p>	TWA
Annex II, TGP/5 box	The TWF considered document TWF/45/22 and agreed with the revision of the flow diagram in TGP/9, Section 1.6 “Schematic overview of TGP documents concerning distinctness”, as set out in Annex I to document TWF/45/22. With regard to the Annex II to document TWF/45/22, the TWF proposed to extend the box for TGP/5 to supplementary procedures (see document TWF/44/31 “Report”, paragraph 50).	TWF
	With regard to Annex II to document TWV/48/22, the TWV agreed with the proposal made by the TWF at its forty-fifth session to extend the box for TGP/5 to supplementary procedures. The TWV also suggested to clarify the term “supplementary procedures” (see document TWV/47/34 “Report”, paragraph 64).	TWV

Proposal

10. Annexes I and II to this document, as amended on the basis of the comments made by the TWPs at their sessions in 2014, provide a proposal for revision of the schematic overview of TGP documents.

SECTION 2.5 “PHOTOGRAPHS”

11. The TC, at its forty-ninth session held in Geneva, from March 18 to 20, 2013, agreed to the new Additional Standard Wording (ASW 16) and Guidance Note (GN 35) for “providing photographs with the Technical Questionnaire” for inclusion in a future revision of document TGP/7 “Development of Test Guidelines” (see document TC/49/41 “Report on the Conclusions”, paragraphs 45 to 47). The new ASW 16 and GN 35 were adopted by the Council at its forty-eighth ordinary session, held in Geneva on October 16, 2014.

12. The TC, at its fiftieth session held in Geneva, from April 7 to 9, 2014, agreed to request an expert from Germany to develop guidance on the use of photographs for the analysis of distinctness for inclusion in document TGP/9. The new guidance would make reference to the complete guidance available in document TGP/7, GN 35 “Providing Photographs with the Technical Questionnaire” (see document TC/50/36 “Report on the Conclusions”, paragraph 42).

13. The following amendment to document TGP/9: Section 2.5 “Photographs” was proposed by the expert from Germany:

“2.5 Photographs

“2.5.1 Photographs can provide useful information as a basis to exclude varieties in the variety collection from the growing trial used for the examination of distinctness. In particular, photographs may provide information on characteristics not included in the TQ. This may, for example, concern shapes, plant structures or color patterns which are not easy for applicants to describe by means of Notes in the Table of Characteristics and, therefore, might not be included as characteristics in Section 5 of the TQ. In addition, the information provided in photographs on characteristics included in the TQ may be more discriminatory than that provided in Section 5 of the TQ and may allow more varieties to be excluded from the growing trial.

“2.5.2 Document TGP/7 indicates that, where useful for the DUS examination, the UPOV Test Guidelines may require that a representative color photograph of the variety accompanies the information provided in the Technical Questionnaire. In such cases, it is recommended that guidance be provided by the authority to enhance the usefulness of the photograph (e.g. to include a metric scale and a color scale in the picture,

to define what parts of the plant should be included, to specify the light conditions and the background color, etc). However, the use of photographs for selecting varieties for the growing trial should take into account that, despite such guidance and the best endeavors of the breeder, photographs may not always accurately reflect the characteristics of the variety.”

“2.5.3 The suitability of photographs for the identification of similar varieties is strongly influenced by the quality of the photographs taken by the authority for the varieties in the reference collection and the photograph of the candidate variety provided by the applicant with the Technical Questionnaire. Comprehensive guidance for taking suitable photographs is provided in document TGP/7, GN 35. The guidance was developed in particular for the applicants to provide suitable photographs of the candidate variety. The same instructions are important and useful for the authorities to take photographs of the varieties in the variety collection under standardized conditions.”

Comments by the Technical Working Parties in 2014

14. At their sessions in 2014, the TWO, TWF, TWC, TWV and TWA considered documents TWO/47/22, TWF/45/22, TWV/48/22, TWC/32/22 and TWA/43/22, respectively, and agreed with the proposed guidance for the revision of document TGP/9 “Examining distinctness”, Section 2.5 “Photographs” as presented in paragraph 13 of this document and in the respective documents (see document TWO/47/28 “Report”, paragraph 60, document TWF/45/32 “Report”, paragraph 51, document TWC/32/28 “Report”, paragraph 62, document TWV/48/43 “Report”, paragraphs 65 and 66, and document TWA/43/27 “Report”, paragraph 57).

Proposal

15. On basis of the guidance proposed by the expert from Germany and comments by the TWPs, at their sessions in 2014, it is proposed to amend document TGP/9: Section 2.5 “Photographs” to include a new paragraph, as follows:

“2.5.3 The suitability of photographs for the identification of similar varieties is strongly influenced by the quality of the photographs taken by the authority for the varieties in the reference collection and the photograph of the candidate variety provided by the applicant with the Technical Questionnaire. Comprehensive guidance for taking suitable photographs is provided in document TGP/7, GN 35. The guidance was developed in particular for the applicants to provide suitable photographs of the candidate variety. The same instructions are important and useful for the authorities to take photographs of the varieties in the variety collection under standardized conditions.”

SECTION 4.3.2 “SINGLE RECORD FOR A GROUP OF PLANTS OR PARTS OF PLANTS (G)” AND SECTION 4.3.4 “SCHEMATIC SUMMARY”

16. The TC, at its fiftieth session held in Geneva, from April 7 to 9, 2014, agreed that examples and illustrations to explain a single measurement (MG) on plant parts should be compiled by the Office of the Union and presented to the TWPs for inclusion in a future revision of document TGP/9, Subsections 4.3.2 and 4.3.4 (see document TC/50/36 “Report on the Conclusions”, paragraph 71).

17. Annex III to this document provides examples of characteristics using single measurement (MG) for plant parts from Test Guidelines adopted in 2013 and 2014.

18. The TWPs, at their sessions in 2014, were invited to consider adding the following example of single record for a group of plants (MG) taken on plant parts for inclusion in a future revision of document TGP/9, Subsection 4.3.2:

“Example (MG)”

“Measurement (MG): “Leaf blade: width” in Hosta (vegetatively propagated) in a trial consisting of plants grown in pots: a leaf from a representative plant is measured.”

19. A suitable illustration would be provided for inclusion in Subsection 4.3.4.

Comments by the Technical Working Parties in 2014

20. The TWO, TWF, TWC, TWV and TWA considered documents TWO/47/22, TWF/45/22, TWC/32/22, TWV/48/22 and the proposed example of a single record for a group of plants (MG) taken on plant parts for

inclusion in a future revision of document TGP/9, Section 4.3.2 “Single record for a group of plants or parts of plants (G)” and Section 4.3.4 “Schematic Summary”, as set out in paragraphs 18 and 19 of this document.

General	<p>The TWO noted that in order to obtain a single record for a group of plants (MG) taken on plant parts of vegetatively propagated plants the DUS examiner would visually assess the plants and confirm they are uniform before proceeding further. The approach is the same as in the “Plant: height” example but organs are removed to conduct the assessment. A typical plant is used to record the measurement. The TWO noted that no variety mean was calculated and that the measurement was used for comparing data with other varieties in the variety collection (see document TWO/47/28 “Report”, paragraph 93).</p>	TWO
	<p>The TWF noted the comment from the expert from Germany in relation to the method of observation MG in current adopted Test Guidelines for fruit species, where all morphological characteristics are indicated as VG/MS, while phenological characteristics indicated as MG. In the case of assessments made on organs taken from all over the plot without noting the individual plants, (e.g. taking a representative fruit sample after harvest), the method of observation should be indicated as MG. In a number of existing Test Guidelines for fruit crops, the method of observation should therefore be reconsidered.</p> <p>The TWF agreed that the comment made by the TWO at its forty-seventh session, to declare a single plant as representative for the entire plot, as soon as uniformity aspects has been found sufficiently fulfilled, is not so applicable in the fruit sector.</p> <p>The TWF agreed that MS should only be considered where each individual plant is measured. In case of several measurements taken for a group of plants or a few groups of plants within the same sample, it should be considered as MG (see document TWF/45/32 “Report”, paragraphs 55 to 57).</p>	TWF
	<p>The TWC noted the proposed example of a single record for a group of plants (MG) taken on plant parts for inclusion in a future revision of document TGP/9, Subsections 4.3.2 “Single record for a group of plants or part of plants (G)” and 4.3.4 “Schematic summary”, as set out in document TWC/32/22, paragraphs 16 and 17 (see document TWC/32/28 “Report”, paragraph 63).</p>	TWC
Example	<p>The TWO, TWF, TWV and TWA agreed that the example of a single record for a group of plants (MG) taken on plant parts for inclusion in a future revision of document TGP/9, Section 4.3.2 “Single record for a group of plants or parts of plants (G)” and Section 4.3.4 “Schematic Summary” should read as follows (see documents TWO/47/28 “Report”, paragraph 94; TWF/45/32 “Report”, paragraph 53; TWV/48/43 “Report”, paragraph 68; and TWA/43/27 “Report”, paragraphs 58 and 59):</p> <p><u>“Example (MG)</u></p> <p><u>“Measurement (MG): “Leaf blade: width” in Hosta (vegetatively propagated): a representative measurement in the plot.”</u></p>	TWO
Illustration	<p>The TWO and TWF agreed that a suitable illustration should be provided for inclusion in document TGP/7, Subsection 4.3.4 (see documents TWO/47/28 “Report”, paragraph 95; and TWF/45/32 “Report”, paragraph 54).</p>	TWO
	<p>The TWV noted the comment made by TWO at its forty-seventh session that a suitable illustration should be provided for inclusion in document TGP/7, Subsection 4.3.4 but agreed that this approach was not applicable in the vegetable sector and, therefore, could not help in providing a suitable illustration (see document TWV/48/43 “Report”, paragraph 69)</p>	TWV

Proposal

21. On basis of the comments by the TWPs at their sessions in 2014, the following example of a “single record for a group of plants (MG) taken on plant parts” is proposed for inclusion in a future revision of document TGP/9, Section 4.3.2 “Single record for a group of plants or parts of plants (G)” and Section 4.3.4 “Schematic Summary”:

“Example (MG)”

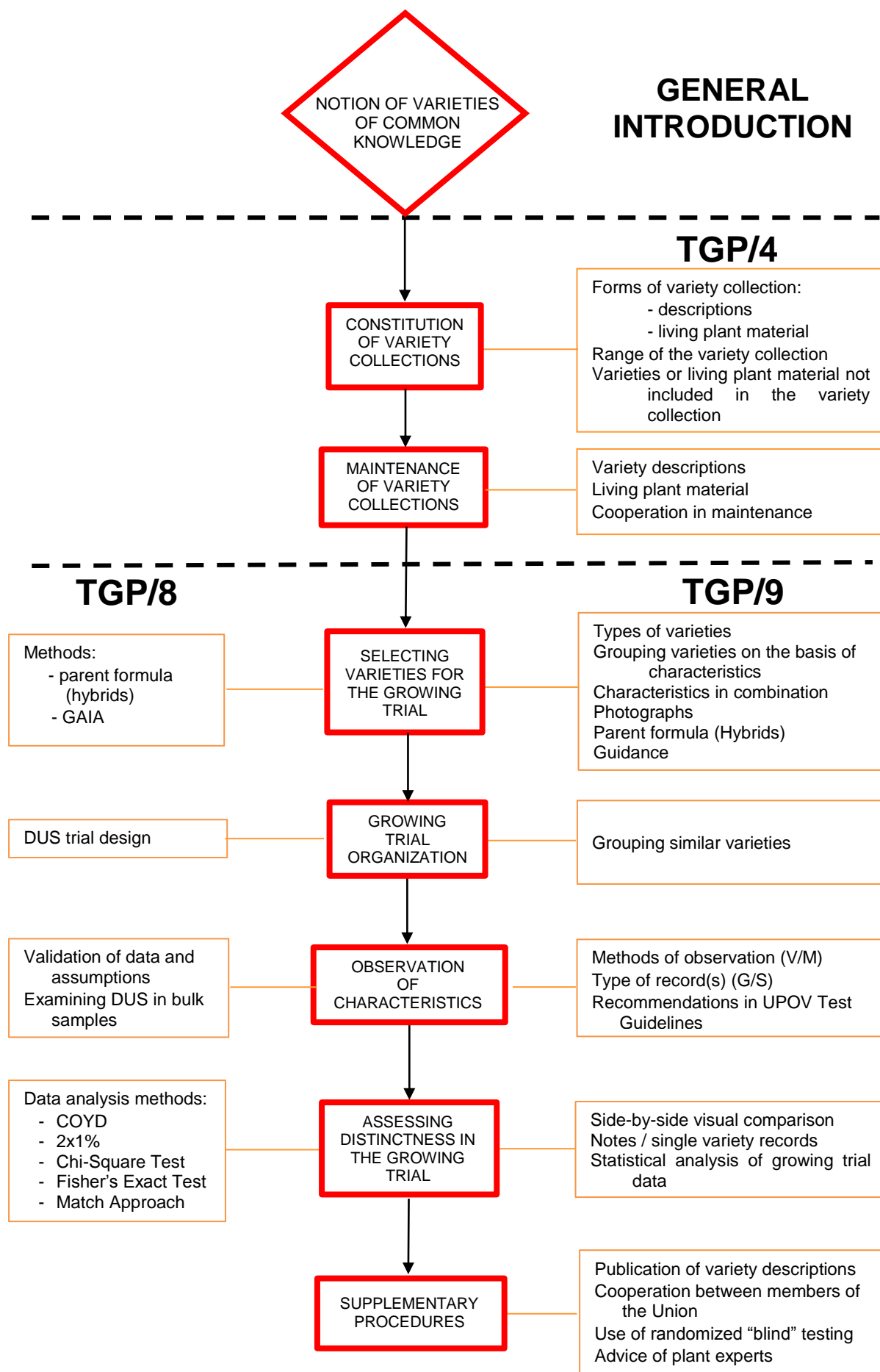
“Measurement (MG): “Leaf blade: width” in Hosta (vegetatively propagated): a representative measurement in the plot.”

22. An illustration is proposed for inclusion in Subsection 4.3.4, as presented in Annex IV to this document.

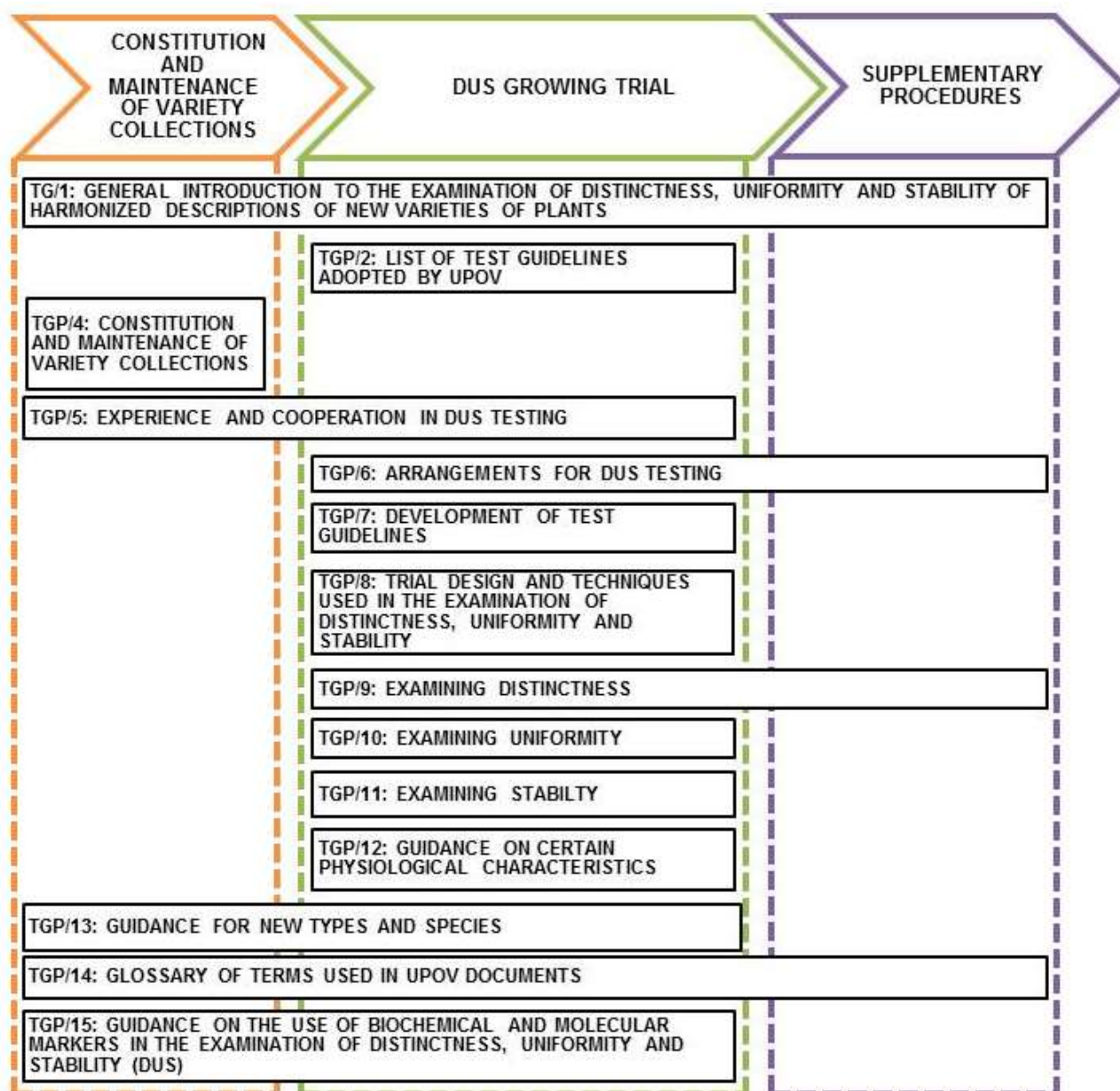
23. The TC-EDC is invited to note the information in this document to be presented to the TC and propose any improvements to the document in that regard.

[Annexes follow]

SCHEMATIC OVERVIEW OF TGP DOCUMENTS CONCERNING DISTINCTNESS



SCHEMATIC OVERVIEW OF TGP DOCUMENTS



[Annex III follows]

ANNEX III

EXAMPLES OF CHARACTERISTICS USING SINGLE MEASUREMENT (MG) FOR PLANT PARTS

Document TG/HOSTA(proj.9)

4. (*)	VG/ MG/ MS	Petiole: length	Pétiole : longueur	Blattstiel: Länge	Pecíolo: longitud		
QN	(a)	very short	très court	sehr kurz	muy corto	Desert Mouse	1
		short	court	kurz	corto	Time Tunnel	3
		medium	moyen	mittel	medio	Earth Angel	5
		long	long	lang	largo	Blue Circle	7
		very long	très long	sehr lang	muy largo	Big Boy, Flower Power, Green Acres	9
9. (*)	VG/ MG/ MS	Leaf blade: width	Limbe : largeur	Blattspreite: Breite	Limbo: anchura		
QN	(a)	very narrow	très étroit	sehr schmal	muy estrecho	Desert Mouse	1
		narrow	étroit	schmal	estrecho	Secret Ambition	3
		medium	moyen	mittel	medio	Risky Business	5
		broad	large	breit	ancho		7
		very broad	très large	sehr breit	muy ancho	Big Boy, Sum and Substance	9

Document TG/286/1 Hebe

8. (*)	VG/ MG	Stem: length of internodes	Tige : longueur des entre-nœuds	Trieb: Internodienlänge	Tallo: longitud de los entrenudos		
QN	(c)	very short	très courts	sehr kurz	muy corta	Karo Golden Esk	1
		short	courts	kurz	corta	Beverley Hills	3
		medium	moyens	mittel	media	Wiri Desire	5
		long	longs	lang	larga	Moonlight	7

Document TG/288/1 Dianella

3.	VG/ MG	Stem: internode length	Tige : longueur de l'entre-nœud	Stengel: Internodienlänge	Tallo: longitud del entrenudo		
(+)							
QN	(a)	very short	très court	sehr kurz	muy corto	TAS300	1
		short	court	kurz	corto	TR20	3
		medium	moyen	mittel	medio		5
		long	long	lang	largo	Goddess	7
		very long	très long	sehr lang	muy largo		9

Ad. 3: Stem: internode length



27.	VG/ MG	Perianth: diameter	Périanthe : diamètre	Blütenhülle: Durchmesser	Perianto: diámetro	
QN	(c)	small	petit	klein	pequeño	1
		medium	moyen	mittel	medio	2
		large	grand	groß	grande	3

[Annex IV follows]

Single record for a group of plants or parts of plants (G)

